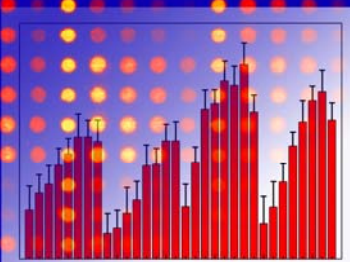


ZeptoVIEW 3

Integrated Software for ZeptoMARK Reverse Array Protein Profiling

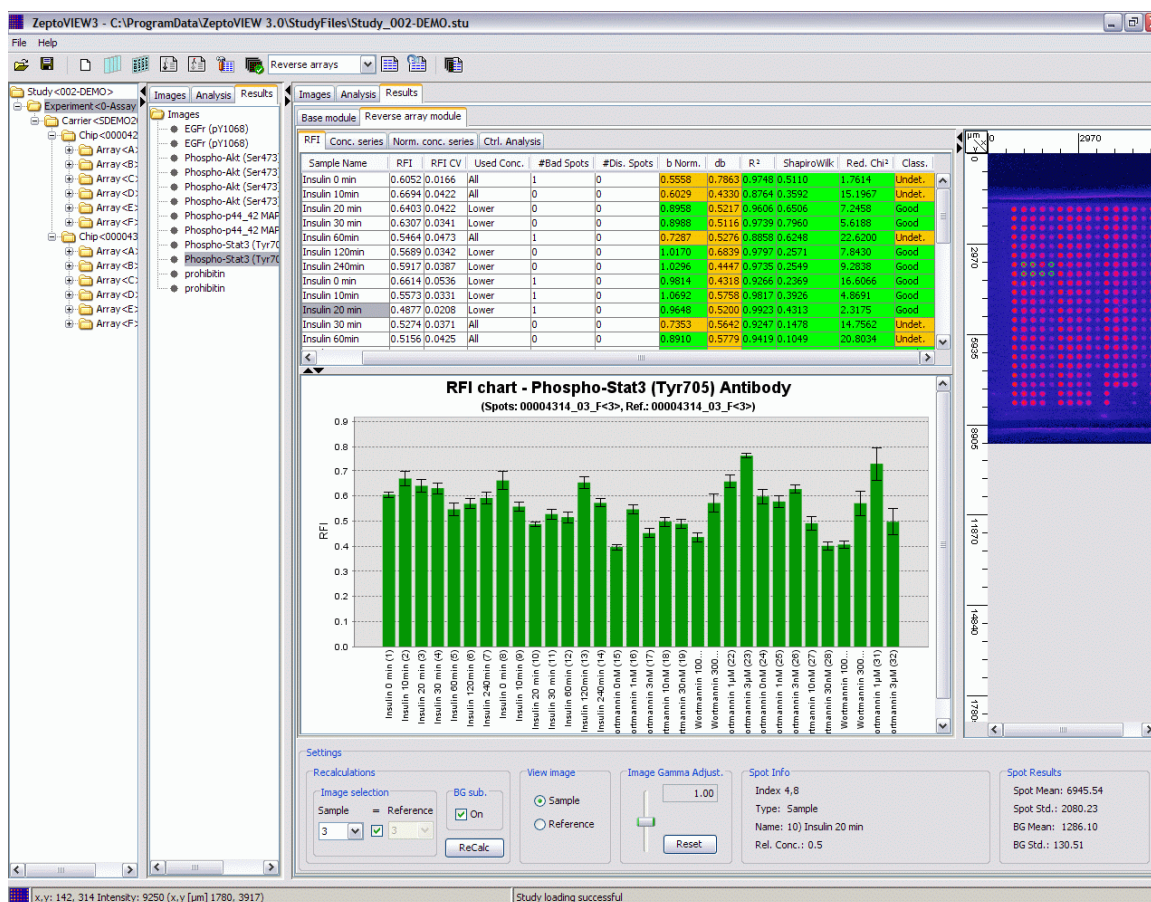


Key Features for Productivity and Data Quality

Designed for reverse protein arrays. **Reliable and accurate** auto-grid and -spot finding. **Reproducible** results.

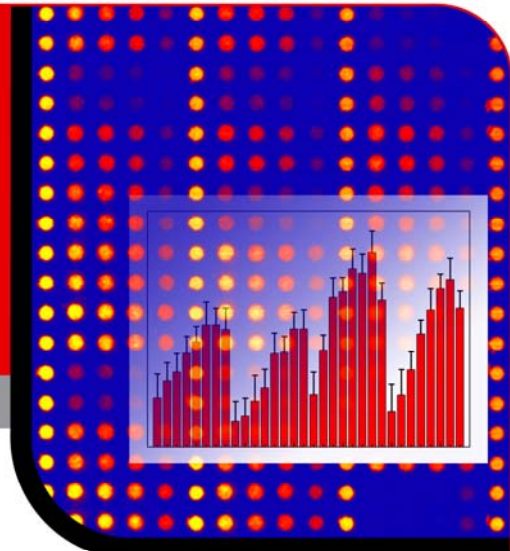
The ZeptoVIEW 3 software program has been especially developed for the analysis of reverse array proteomics experiments, offering researchers faster results, a better overview of the information generated from experiments and more sophisticated algorithms for grid and spot finding. This new software streamlines data input from start to finish, tracking information for each stage of an experiment with coded chips and barcodes. Users have complete control and management of data via intuitive context menus.

ZeptoVIEW 3 integrates the entire workflow of reverse array protein profiling studies – easily define your study, track your samples, analyze the data and export the results for further analysis. Enhancements include dual data quality quantification for both spot and sample analysis levels, and a choice of improved algorithms for both grid and spot finding. Simultaneous display of array image, bar plot graph, and result table significantly simplifies the evaluation of results.



ZeptoVIEW 3

Integrated Software for ZeptoMARK Reverse Array Protein Profiling



New features in ZeptoVIEW 3 include:

Improved workflow and data tracking:

- NEW: Easier and faster to use with one-time data entry for integrated data analysis throughout the process – from study planning to analysis of bar graphs and tables
- NEW: Track data start-to-finish with coded chips, and barcodes
- NEW: All experiment information stored in image header

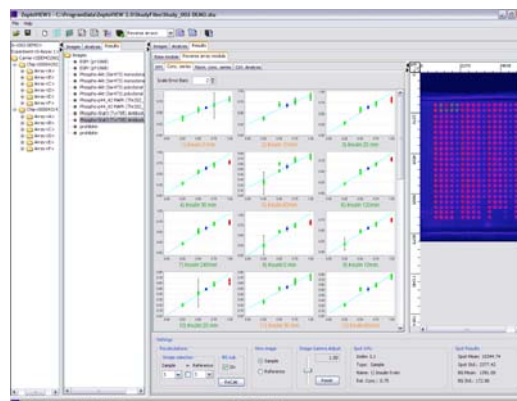
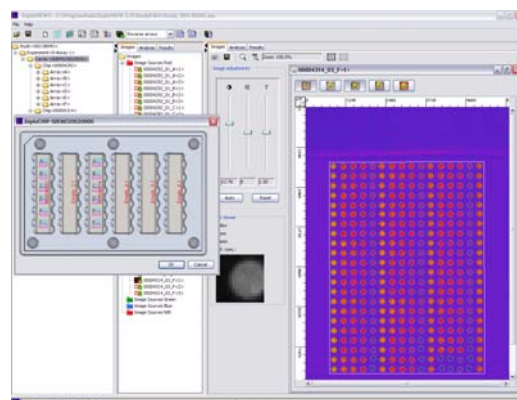
Improved and extended calculations:

- NEW: Three algorithms for grid and spot finding for maximum flexibility and accuracy
- NEW: Integrated, fast, and flexible reverse array data evaluation
- NEW: Quality quantification both for spot and sample analysis levels
- NEW: Improved referencing through global and local reference fits

High flexibility and ease of use:

- NEW: Simultaneous display of array image, barplot graph, and result table for easy evaluation of results
- NEW: Template-based array layout for greater flexibility in data management
- NEW: Rapid visualization of protein expression and activation results
- NEW: Improved visualization with choice of logarithmic false color or linear gray scale display of images

Included with ZeptoVIEW 3 is a barcode printer. Also available is an optional print server interface for network printing.



System Requirements for ZeptoVIEW 3

Processor	Intel Pentium Dual Core or higher
Processor Speed	2 GHz or faster
RAM	Min. 1 GB, recommended 4 GB or more
Monitor	Recommended: 1280 x 1024 pixels or higher 17" or larger
Operating System	Windows XP / Windows Vista / Windows 7 Windows XP x64 / Windows Vista x64 / Windows 7 x64